
Bluetooth Serial Adaptor FSC-BP2381 Datasheet



FEASYCOM

1. Overview

FSC-BP2381 is a wireless transmission adaptor with RS232 interface, which can replace traditional wired RS232 transmission, and its installation is simple and convenient, eliminating the hassle of connection wiring.



2. Product

2.1 Bluetooth Adaptor

BP2381 (DSUB FEMALE)



BP2381 (DSUB MALE)



2.2 TYPE-C Cable



3. Specification

Specification	Description
MODEL No.	(1)BP2381-F(DSUB FEMALE) (2)BP2381-M(DSUB MALE)
Bluetooth Version	Bluetooth 4.2
Band Frequency	2.4 GHz
Coverage	Up to 200 meters (Open space)
Antenna	PCB on Board
Power Supply	USB, D-Sub 9pin
Supply Voltage	DC 5V, 100mA >USB BUS pwer >RS-232C:DSUB Pin9
Interface	RS232C
Color	Black
Protocol	SPP [Serial Port Profile]
Baud rate	9600/19200/38400/57600/115200 bps
Temperature	Indoor working
LED States	Red,Blue

4. Operating Instructions



- a. DB9: DSUB Female or Male connector**
 - Serial interface, connect using serial communication

- b. LED**
 - Red indicates communication connection status
 - Blue indicates connection waiting status

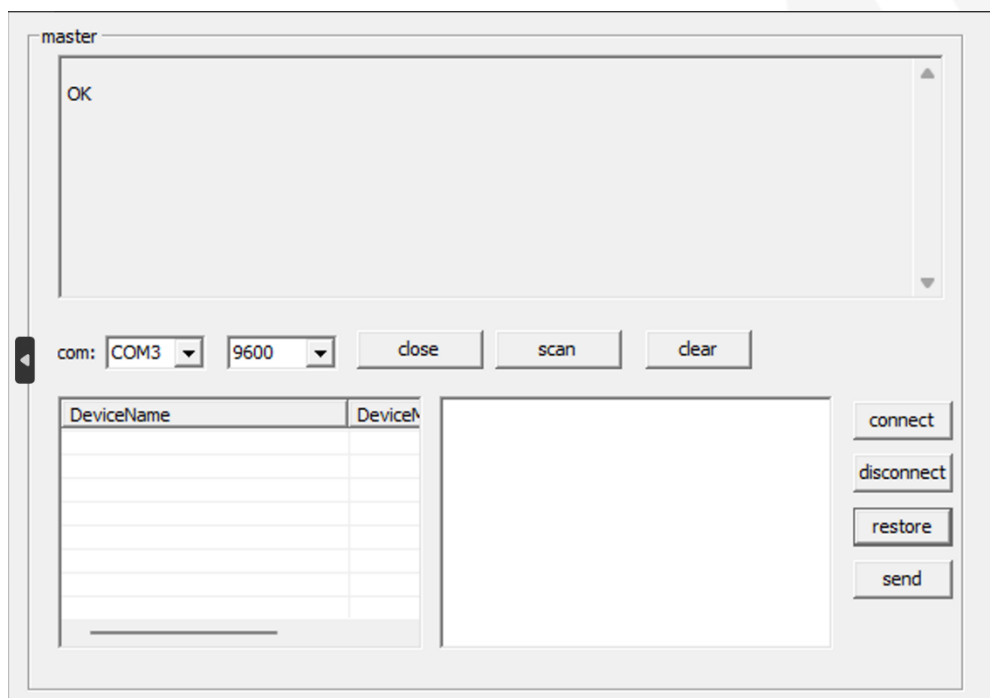
- c. TYPE-C**
 - Used as power input

5. Setting

The speed of communication data transmission can be set according to the needs of the application. default communication rate is set to 9600 bps.

BP2381 DSUB FEMALE and DSUB MALE are connected to the computer with RS232 serial port line, and the upper computer with modified baud rate is opened.

The interface is as follows:



1. Select COM port
2. Select communication speed
3. Click "Open" Button
4. Select the communication speed you want to change
- 5 Click on the Change Communication Speed Setting button

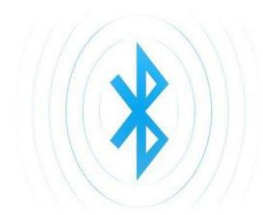
6. Connection mode

6.1 Computer



BP2381(DSUB FEMALE)

- > Connect to a serial port on your PC
- > Use TYPE-C cable to connect PC USB port to BP2381 TYPE-C interface
(Connect using the included USB cable)



6.2 Printer



BP2381(DSUB MALE)

- > Plug in the serial port on the printer
- > Verify that the printer's communication rate is consistent with the BP2381 settings

7. Terms of Use

The contents of this manual may be optimized and modified without notice, and Feitong reserves the right to final interpretation.

Bluetooth is a trademark of Bluetooth Special Interest Group (Bluetooth SIG).

Ownership of other trademarks is vested in their respective owners.

If required, please contact us or visit <https://www.feasycom.com/> for more information.

8. Contact

Shenzhen Feasycom Co., Ltd

Address: Room 508, Building A, Fenghuang Zhigu, No.50, Tiezai Road, Xixiang Street, Baoan District, Shenzhen, China 518102

Slaes service: timlee@feasycom.com

Revision history

Version	Changes	Author
1.0	First version	MO